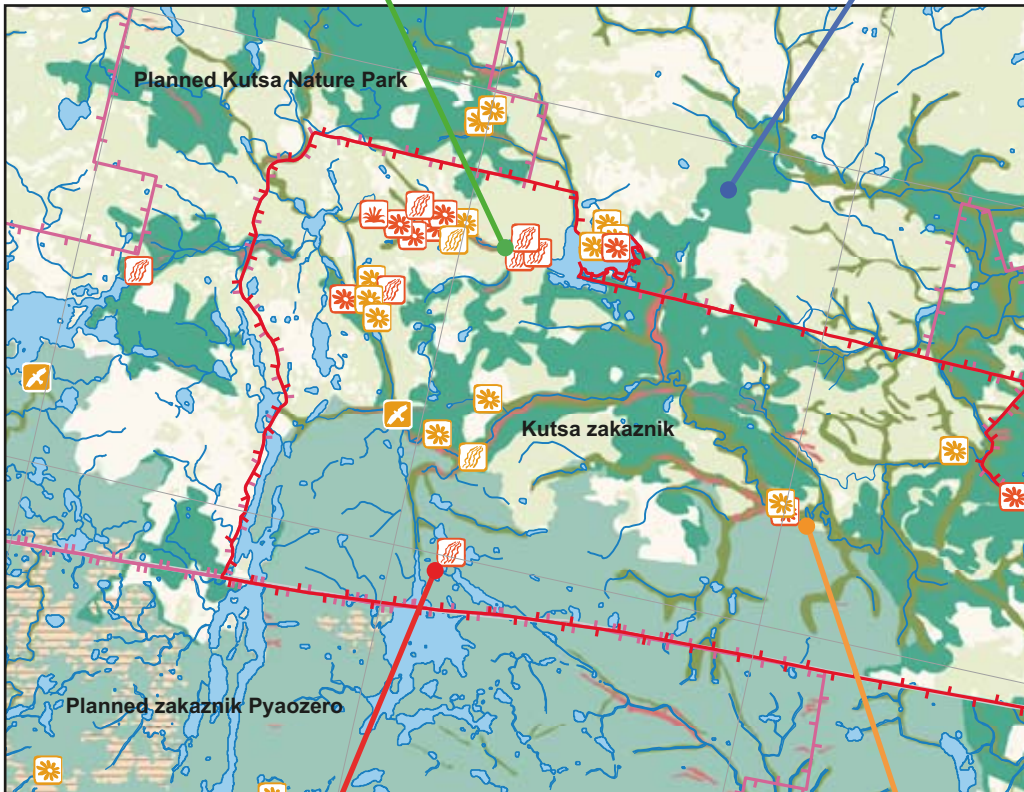
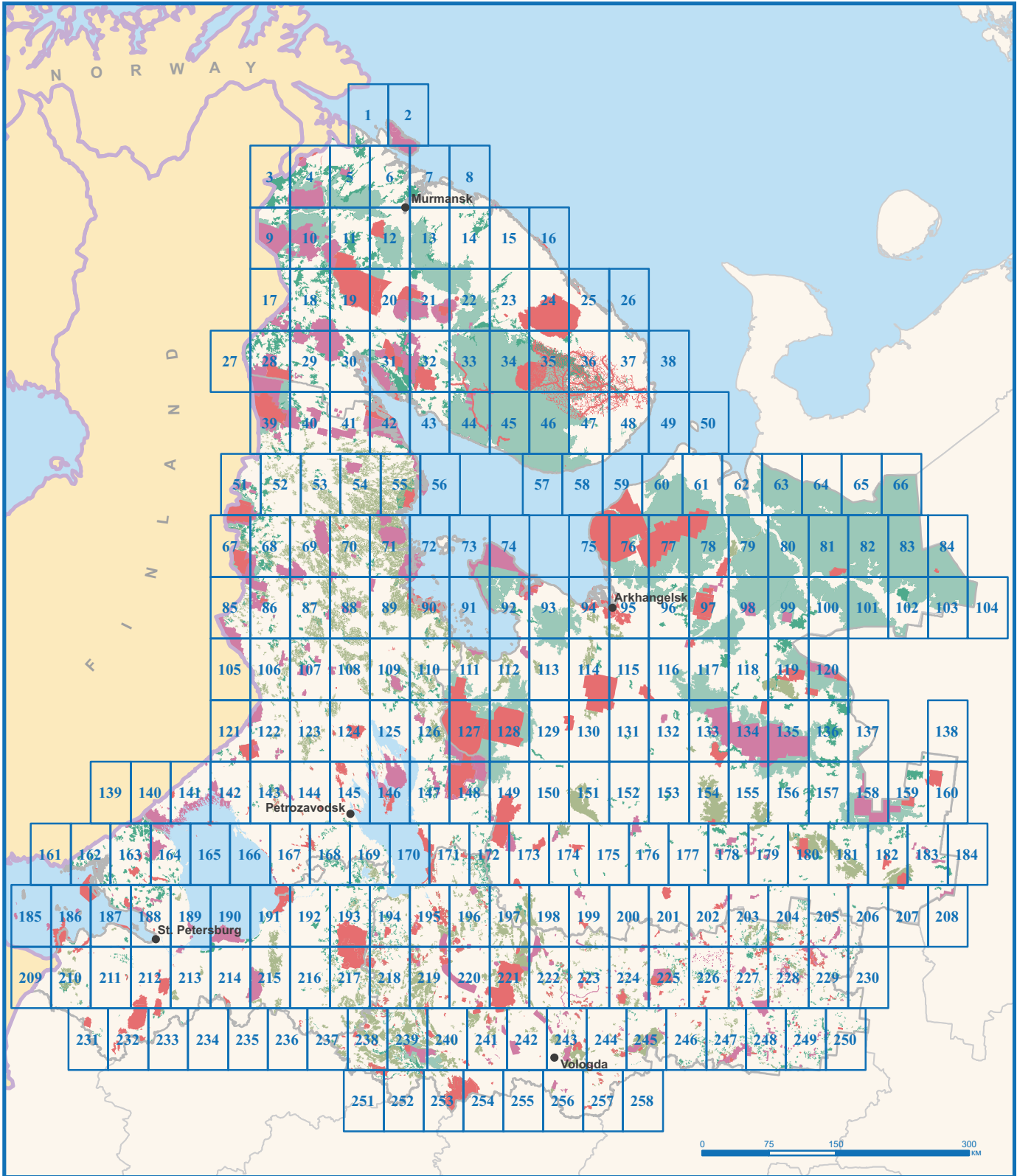


# MAPS of valuable natural objects discovered during the project

Scale 1:300 000



# INDEX MAP of the study area



## LEGEND

- Existing protected areas
- Planned protected areas
- Intact forest landscapes
- Intact mire massifs
- Intact forest tracts

# LEGEND

## Protected areas

- Existing protected areas
- Small-sized protected areas
- Buffer zones of protected areas
- Planned protected areas

## Key habitats of animal species

- Sea bird colonies
- Important Bird Areas in Russia
- Salmon spawning sites**
  - data obtained from field investigations
  - data obtained from the Rules of Fisheries

## Aquatic biotopes

- Stratified lakes

## Grasslands

- Coastal grasslands

## Biotopes with prevalence of abiotic component, coastal and aquatic biotopes

- Deltas
- Estuaries
- Gorges and rocky walls, deeply incised river valleys, canyons, ravines, cliffs
- Ravines of small rivers and streams, screes and temporary streams
- Intact riversides, flood plain complexes and other natural biotopes at the mouths of rivers
- Shallow water, littorals and inter-tidal sandy shoals

## Forest biotopes

- Old-growth, minimally transformed coniferous forests dominated by spruce and fir in southern boreal and hemiboreal forests with nemoral elements in ground vegetation
- Broadleaved and mixed coniferous-broadleaved forests
- Natural larch stands
- Dry pine-dominated forests confined to sandy dunes, rocks, shores of large rivers and lakes

## Tundra biotopes

- Alpine tundra areas in the forest zone

## Intact nature areas

- Intact forest landscapes
- Intact forest tracts
- Boundaries of intact forest tracts selected within intact mire massifs

## Forest tracts with high restoration potential

- Old unmanaged mixed birch-aspen forests
- Old unmanaged mixed spruce-aspen forests

## Mire biotopes

- Sloping fens
- Spring fens, small-sized
- Spring fens, large enough to be indicated in its boundaries
- Aapa mires outside their distributional area (aapa-province)

## Intact mire massifs, colored according types of mire biotopes selected within them

### Ombrotrophic mire types:

- liverwort-lichen-sphagnum, ridge-hollow-pool bog complexes (White Sea and eastern Baltic Sea coasts);
- sphagnum ridge-hollow bog complexes (continental);
- dwarf-lichen-palsa mires (on the permafrost);
- dwarf-sphagnum bogs with pine layer (continental);
- cottongrass-sphagnum bogs (continental).

### Minerotrophic mire types:

- sedge fens and sedge-grass-spring fens of the eutrophic class (intrazonal types);
- sedge- and grass-moss stringe-flark-pool aapa mire complexes (inside aapa-province and north to aapa-province);
- sedge-grass-sphagnum, non-structured, mesotrophic;
- tree-grass, eutrophic (forest-covered mires).

## Habitats of animal species included in Red Data Book of Russian Federation

Category	Plants, fungi and lichens				Animals					
	vascular plants	bryophytes	lichens	fungi	molluscs	insects	fishes	Cyclostomata	birds	mammals
Category 0										
Category 1										
Category 2										
Category 3										
Category 4										
Category 5										

\* habitats of hunting game birds are not indicated

## Borders of administrative units

- State border of the Russian Federation
- Borders of administrative units within the Russian Federation

## Road network

- Railways
- Highways
- Roads with hard surface
- Roads without hard surface

## Settlements

- MEDVEZHYESGORSK**
- Cities
- Elizavetinka
- Other selected townships and villages

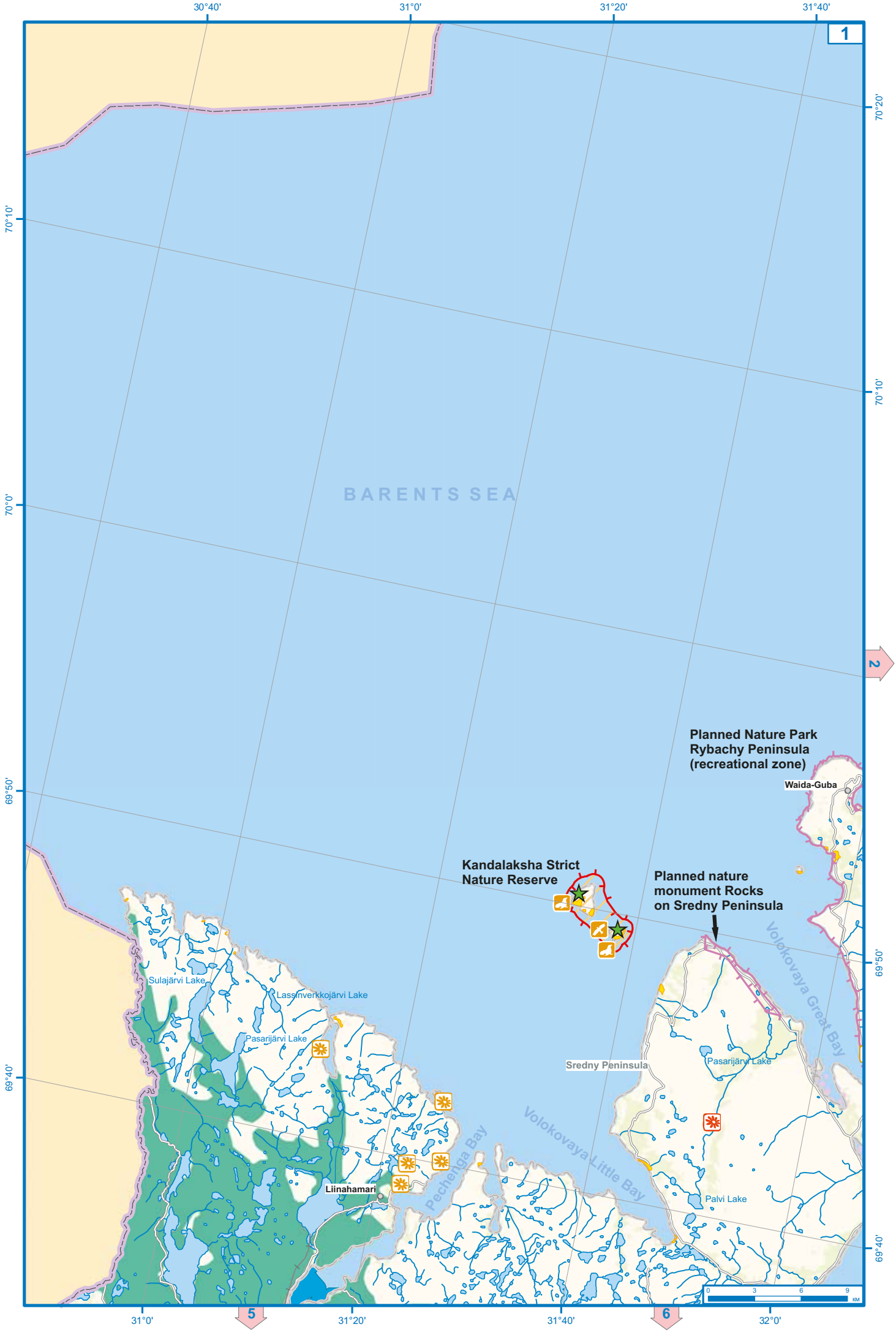
## Hydrographic network

- Lakes
- Larger rivers
- Medium river
- Smaller rivers, rivulets, brooks

## Vegetation

- Forest covered land









2

BARENTS SEA

Waida-Guba

Rybachy Peninsula

Planned Nature Park  
Rybachy Peninsula,  
specially protected  
site Skorbeev Bay

Planned Nature Park Rybachy  
Peninsula, specially protected  
site Zubov Bay

Planned Nature Park  
Rybachy Peninsula  
(recreational zone)

Zubovka

Rybachy Peninsula

Planned Nature Park Rybachy  
Peninsula, specially protected  
site Tsypnavolok

Tsypnavolok



32°20'

32°40'

33°0'

33°20'

70°20'

70°10'

69°50'

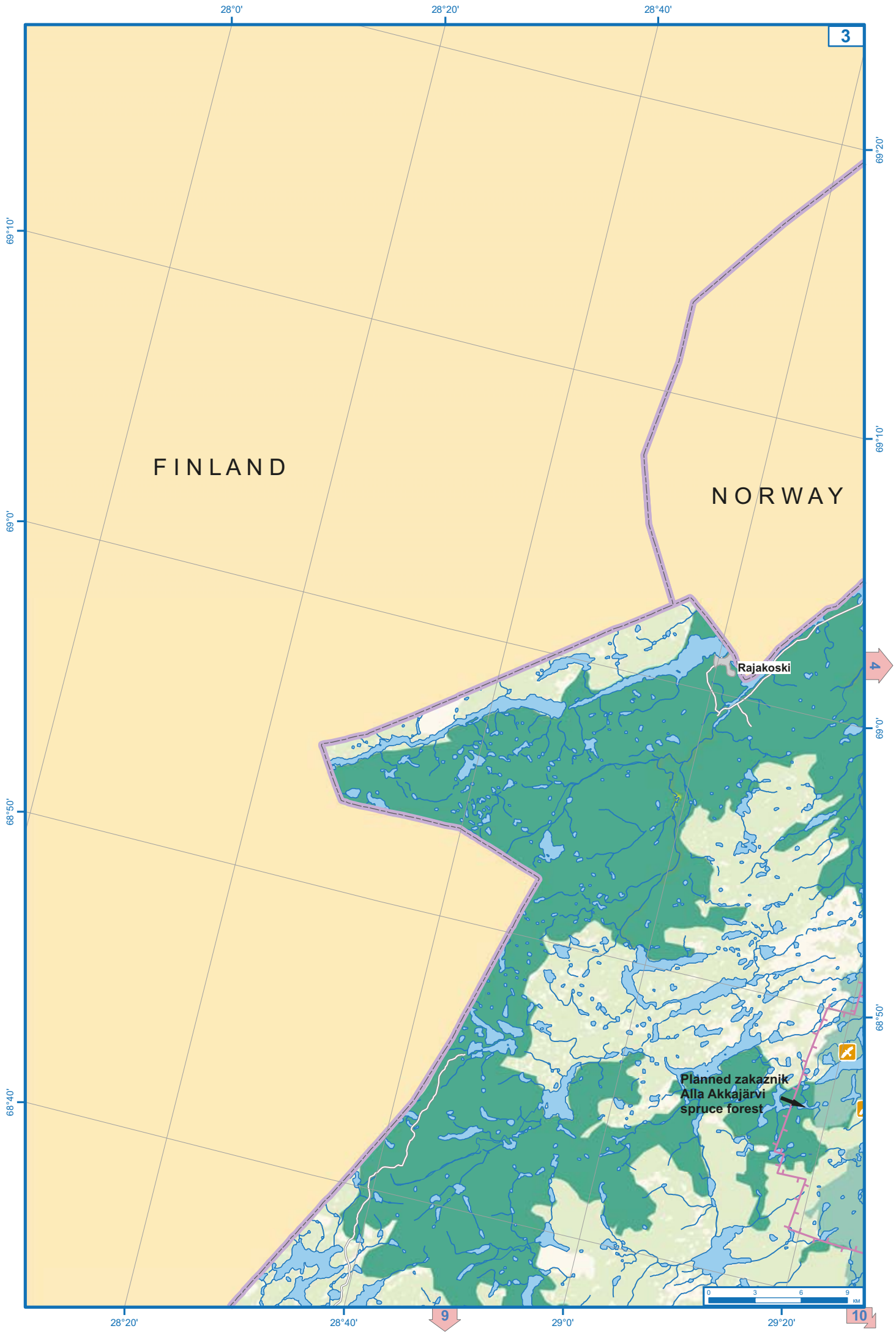
69°40'

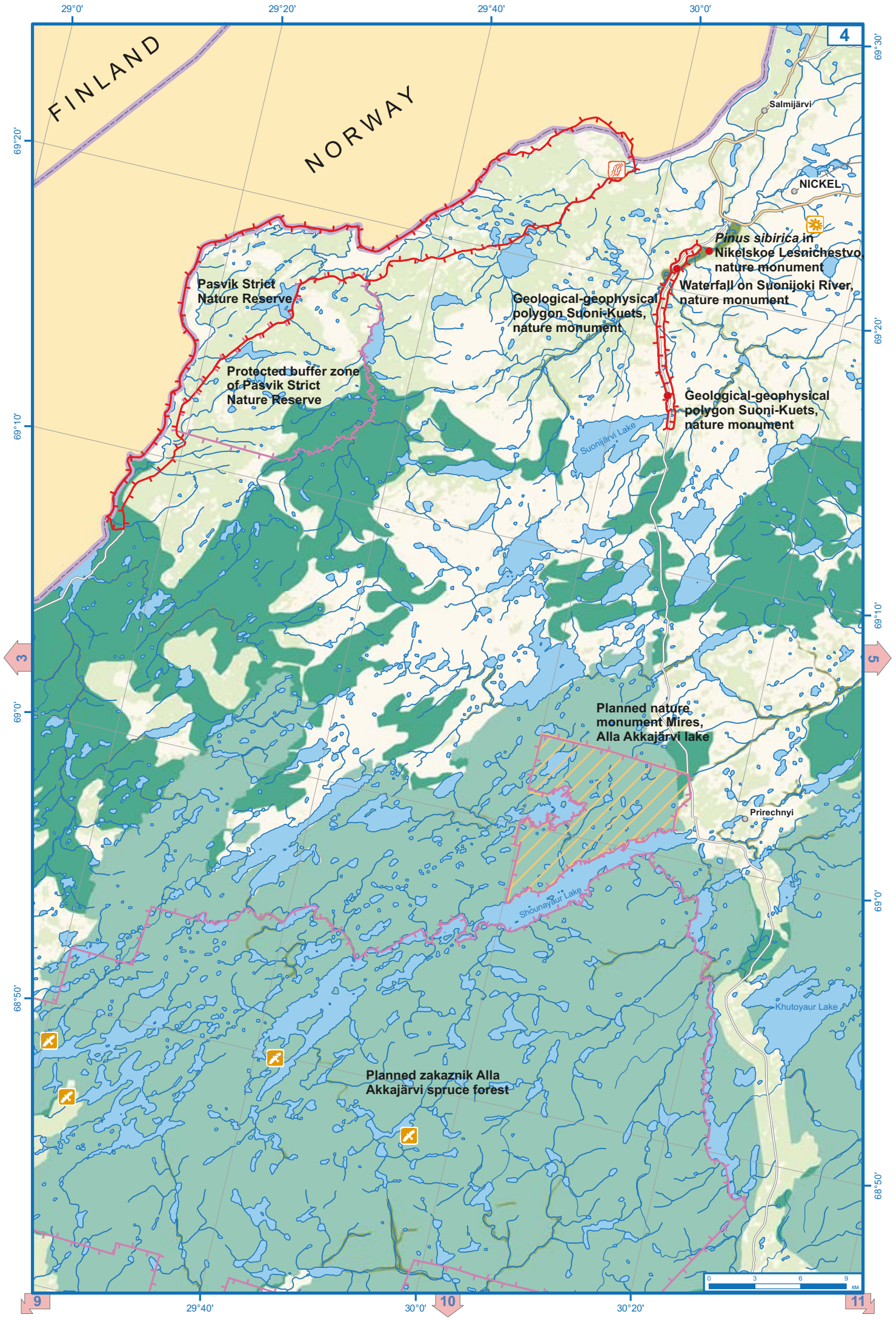
70°20'

70°10'

70°0'

69°50'





FINLAND

NORWAY

4

Salmijärvi

NICKEL

*Pinus sibirica* in  
Nikelskoe Lesnichestvo  
nature monument

Pasvik Strict  
Nature Reserve

Geological-geophysical  
polygon Suoni-Kuets,  
nature monument

Waterfall on Suonijoki River,  
nature monument

Protected buffer zone  
of Pasvik Strict  
Nature Reserve

Geological-geophysical  
polygon Suoni-Kuets,  
nature monument

Suonijärvi Lake

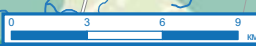
Planned nature  
monument Mires,  
Alla Akkajärvi lake

Prirechnyi

Shounajärvi Lake

Khutoyaur Lake

Planned zakaznik Alla  
Akkajärvi spruce forest



9

29°40'

30°0'

30°20'

11

3

5

9

9

9

10

11

69°10'

69°20'

69°10'

69°20'

69°30'

29°0'

29°20'

29°40'

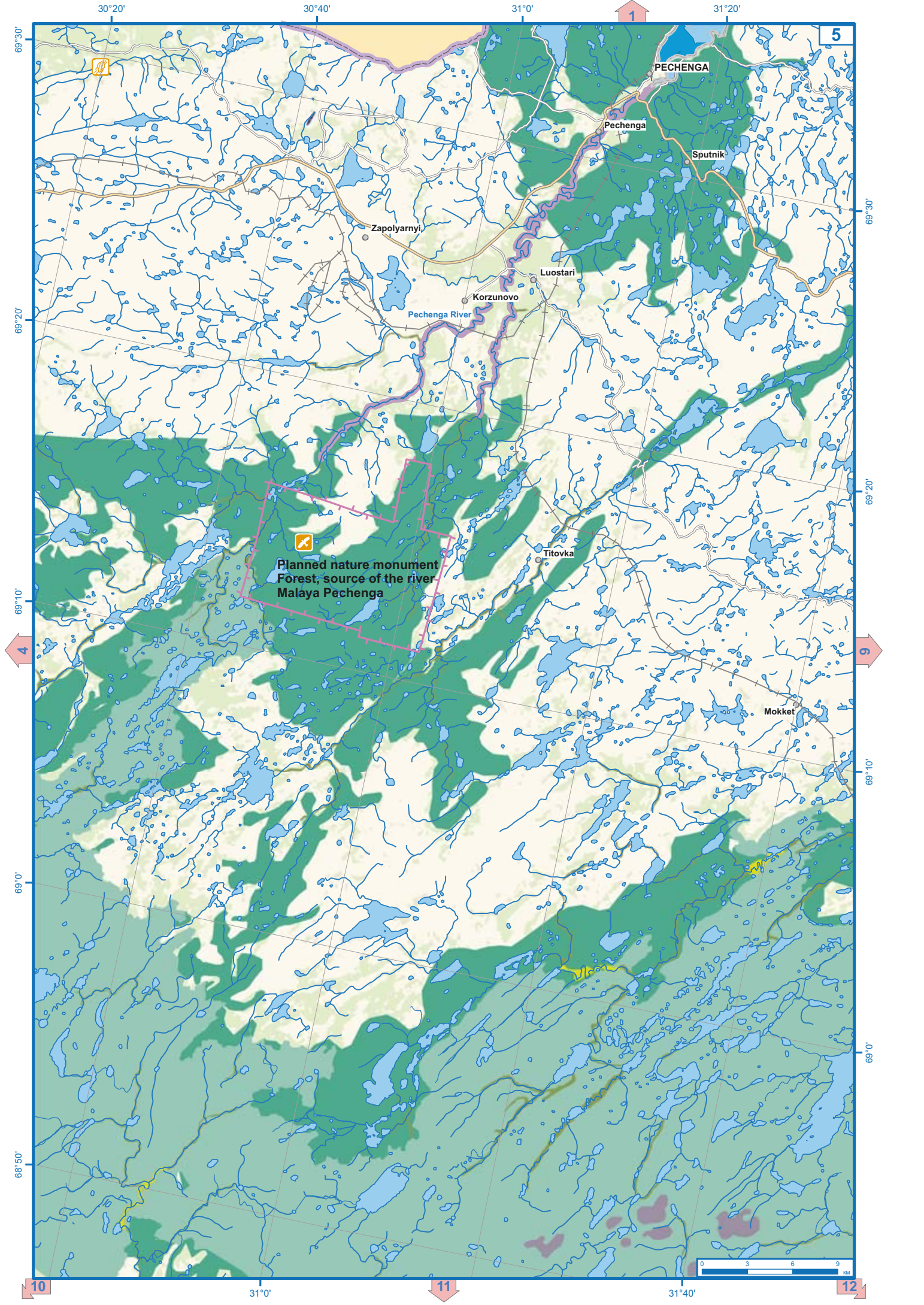
30°0'

69°30'

69°0'

68°50'





30°20'

30°40'

31°0'

31°20'

5

PECHENGA

Pechenga

Sputnik

Zapolyarnyi

Luostari

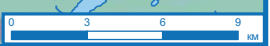
Korzunovo

Pechenga River

Titovka

Planned nature monument  
Forest, source of the river  
Malaya Pechenga

Mokket



69°30'

69°20'

69°10'

69°0'

68°50'

69°30'

69°20'

69°10'

69°0'

68°50'

10

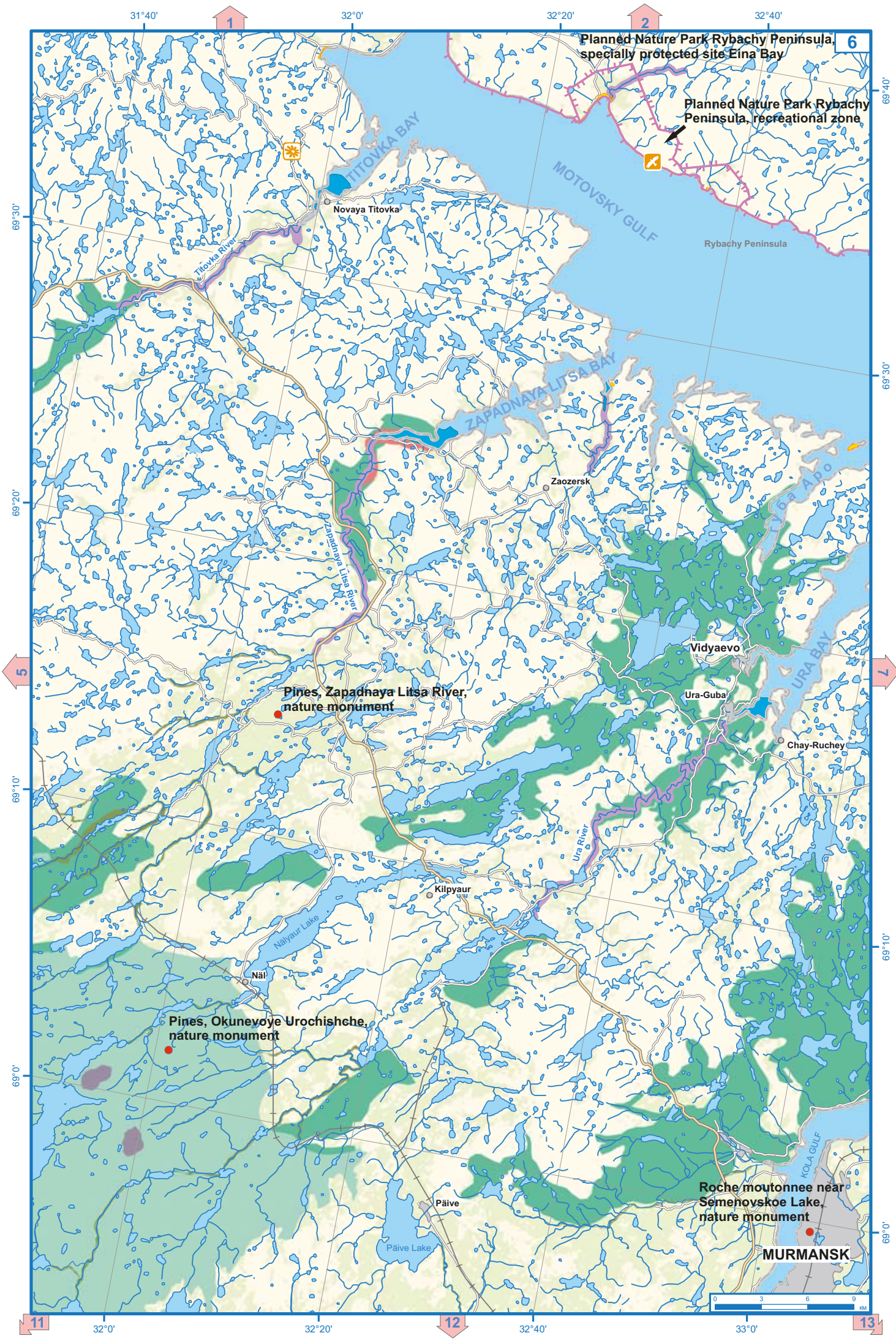
31°0'

11

31°40'

12









Planned Nature Park Rybachy Peninsula, recreational zone

Planned Nature Park Rybachy Peninsula, specially protected site Tsypnavolok

Planned Nature Park Rybachy Peninsula, specially protected site Gorodets sea bird colonies

BARENTS SEA

Shalim Island

Kildin Island

Kuwshinskaya Salma

Zapadnyi Kildin

Gadzhyevo

Snezhnogorsk

POLYARNY

Tyuvyagubskui Mayak

Goryachye Ruchyi

Zarubikha

Zarubikha River

Retinskoye

Belokamenka

SEVEROMORSK

Roslyakovo

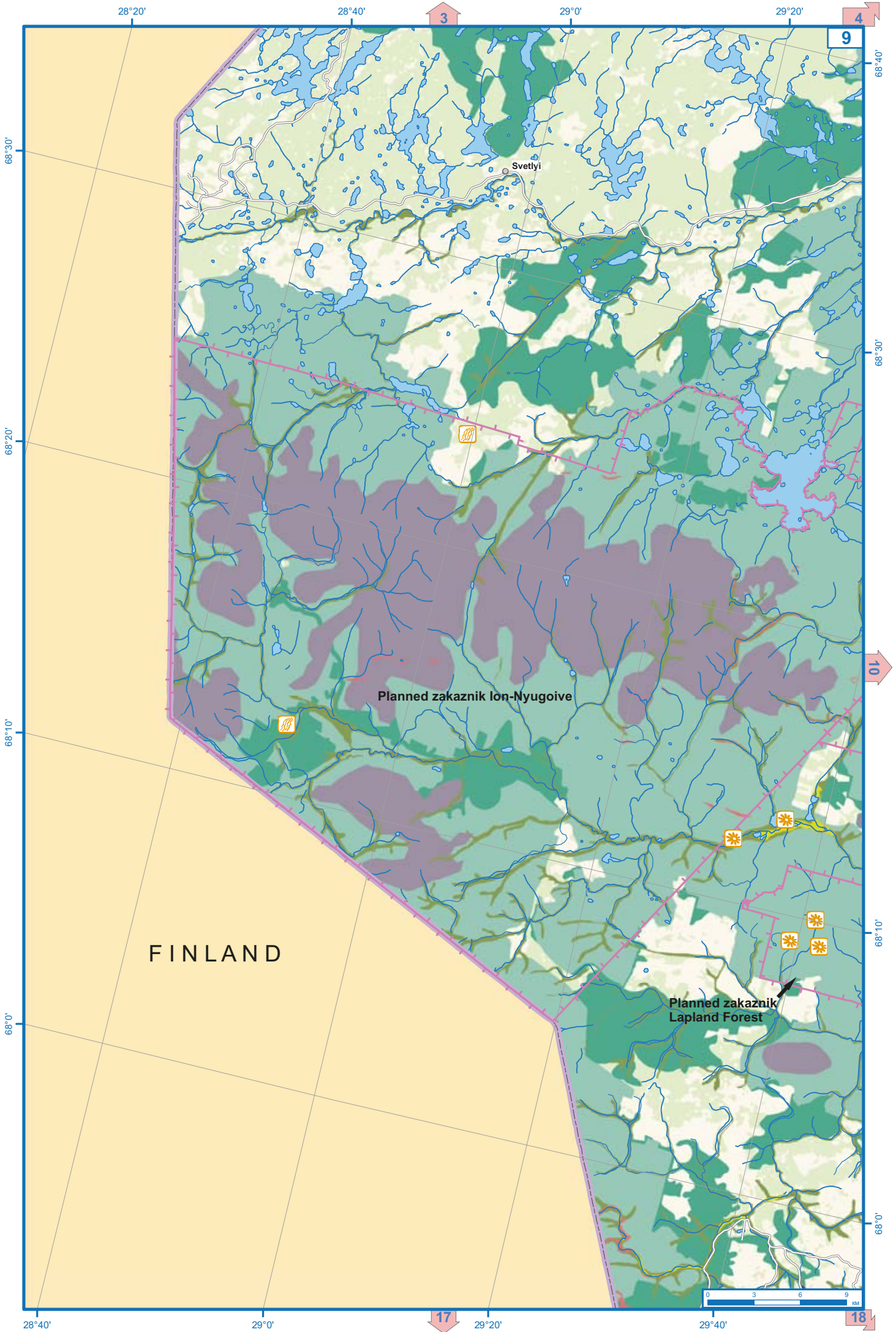
Safonovo

Shchukozero

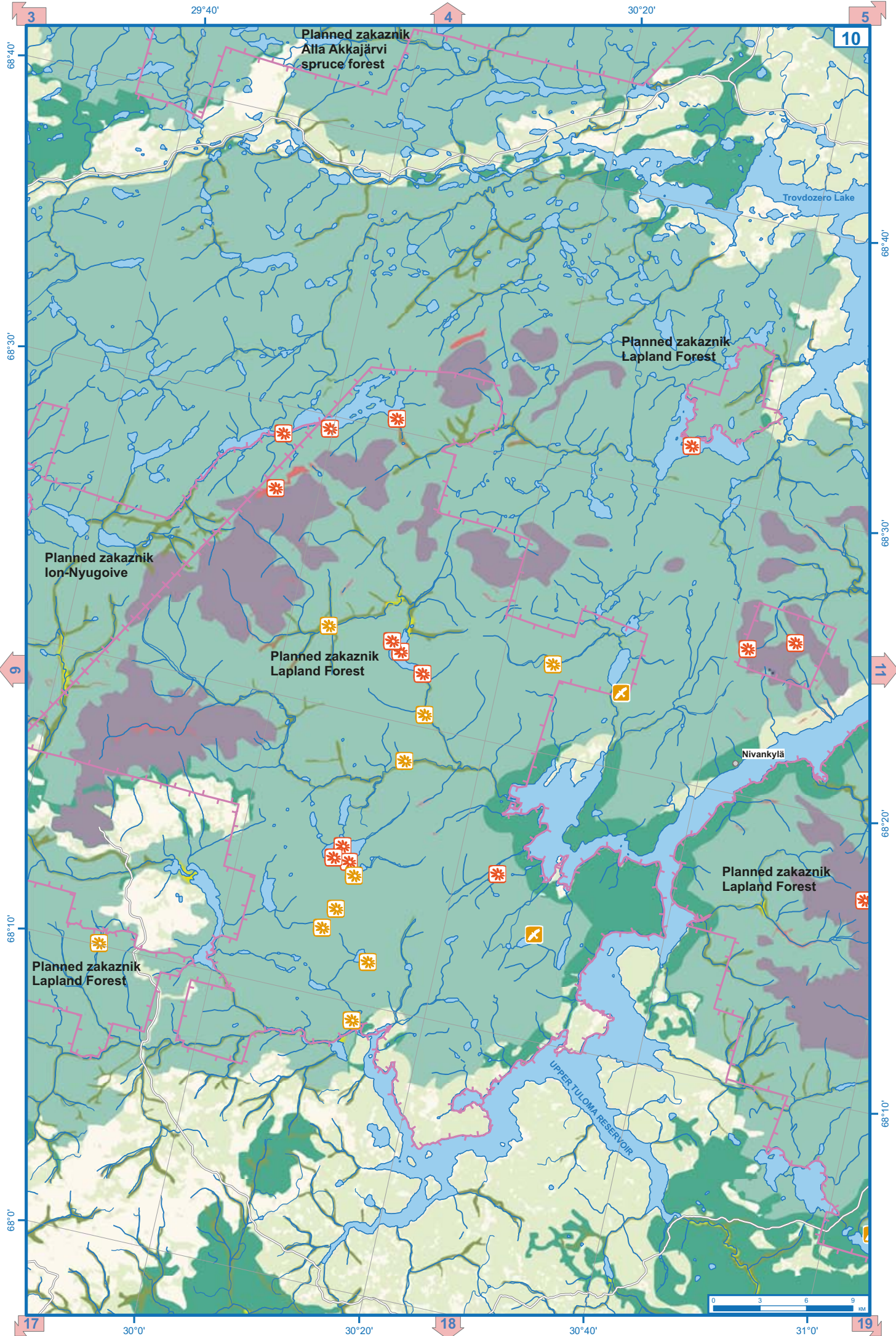




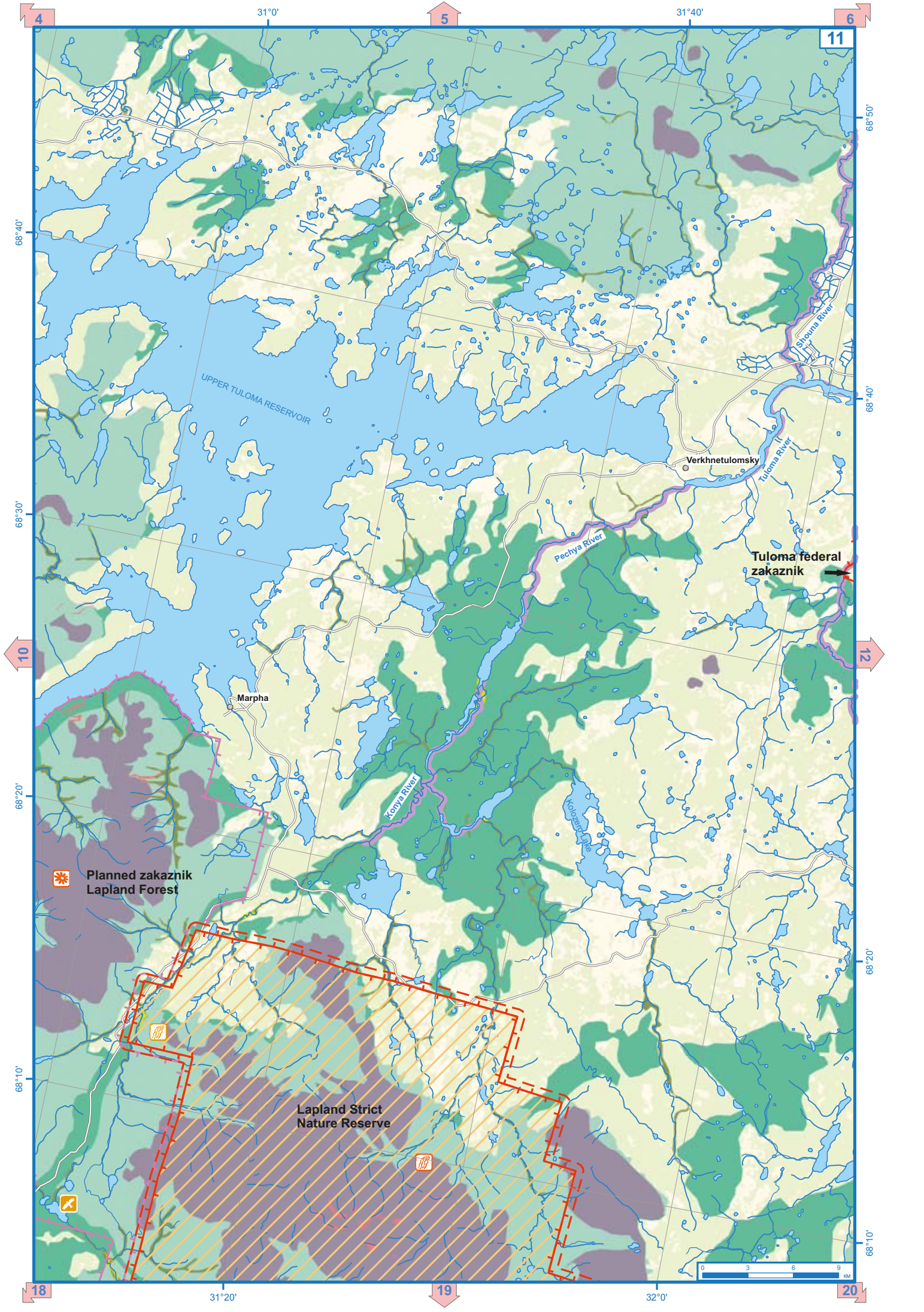












31°0'

5

31°40'

6

11

68°50'

68°40'

UPPER TULOMA RESERVOIR

Verkhnetulomsky

Tuloma federal zakaznik

68°40'

Pechya River

68°30'

10

12

Marpha

Konyra River

Planned zakaznik  
Lapland Forest

68°20'

Lapland Strict  
Nature Reserve

68°20'

68°10'



68°10'

18

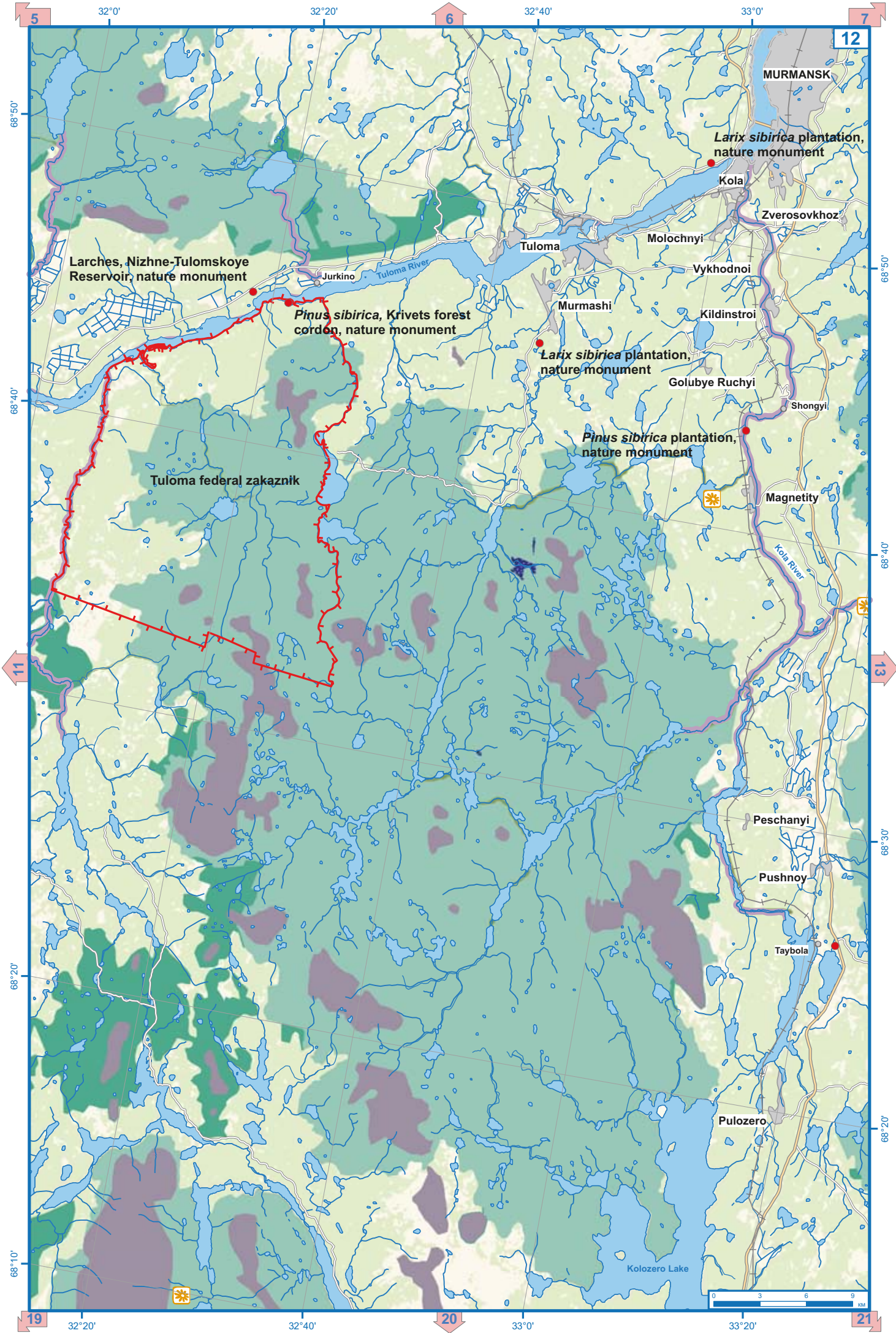
31°20'

19

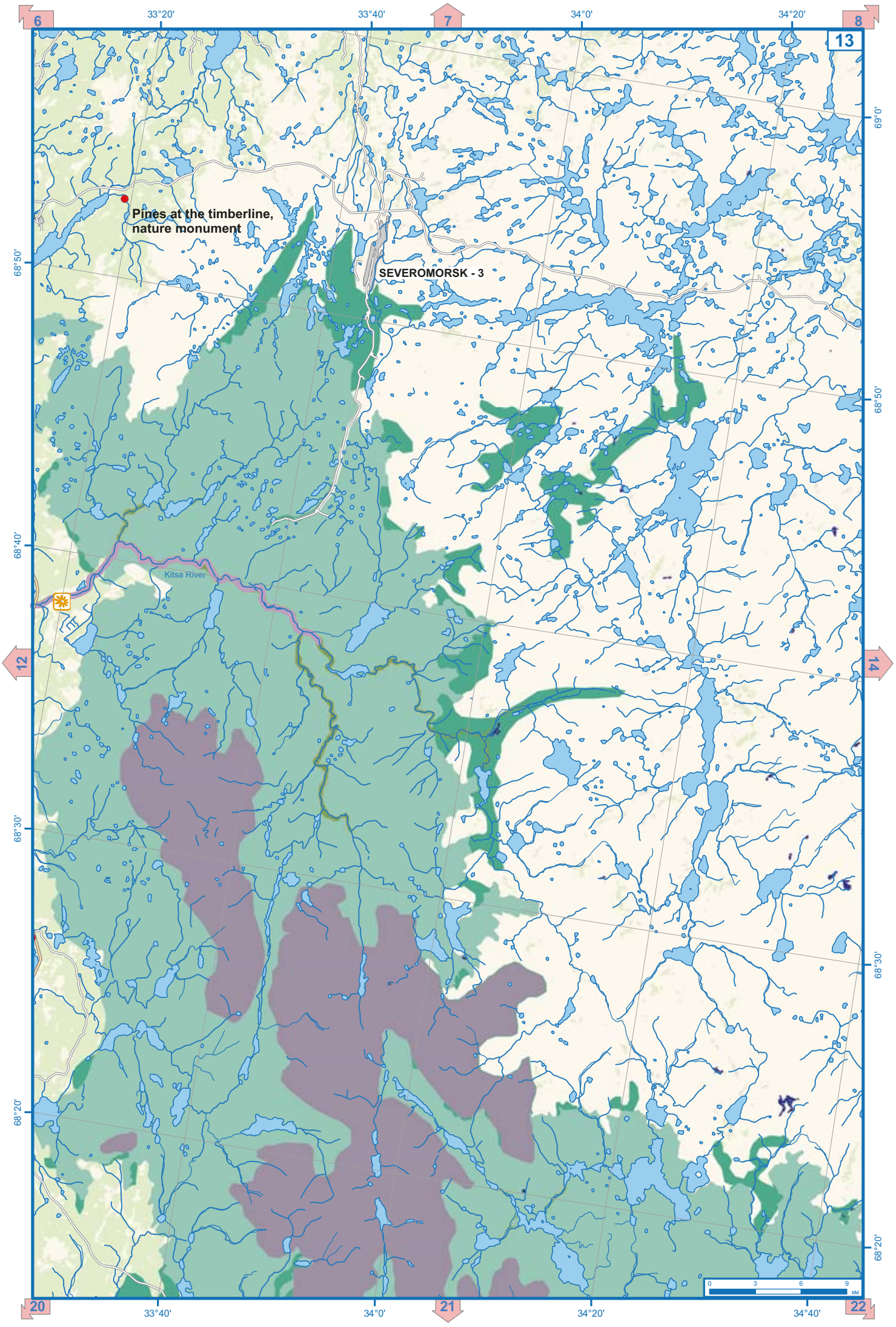
32°0'

20









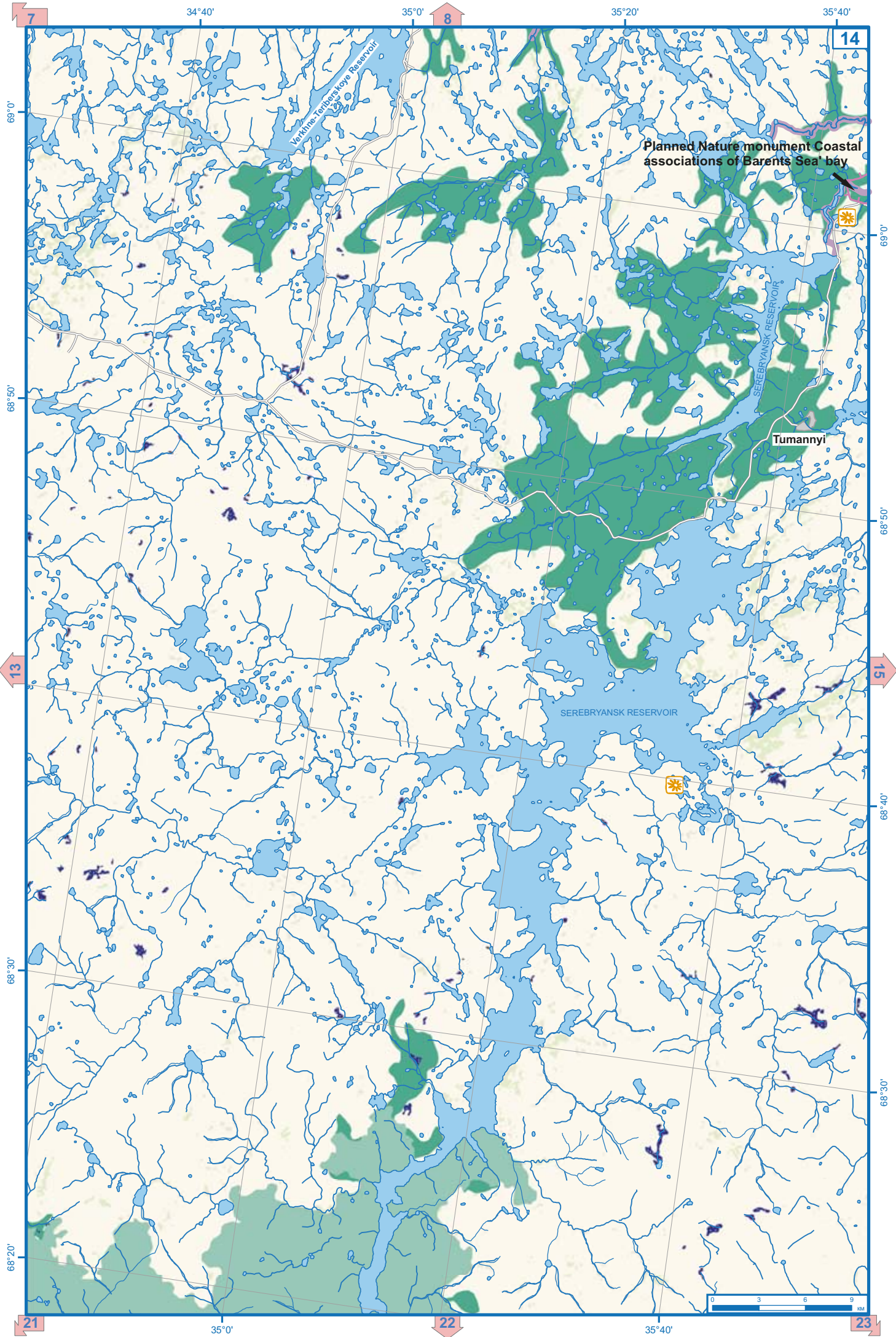
Pines at the timberline,  
nature monument

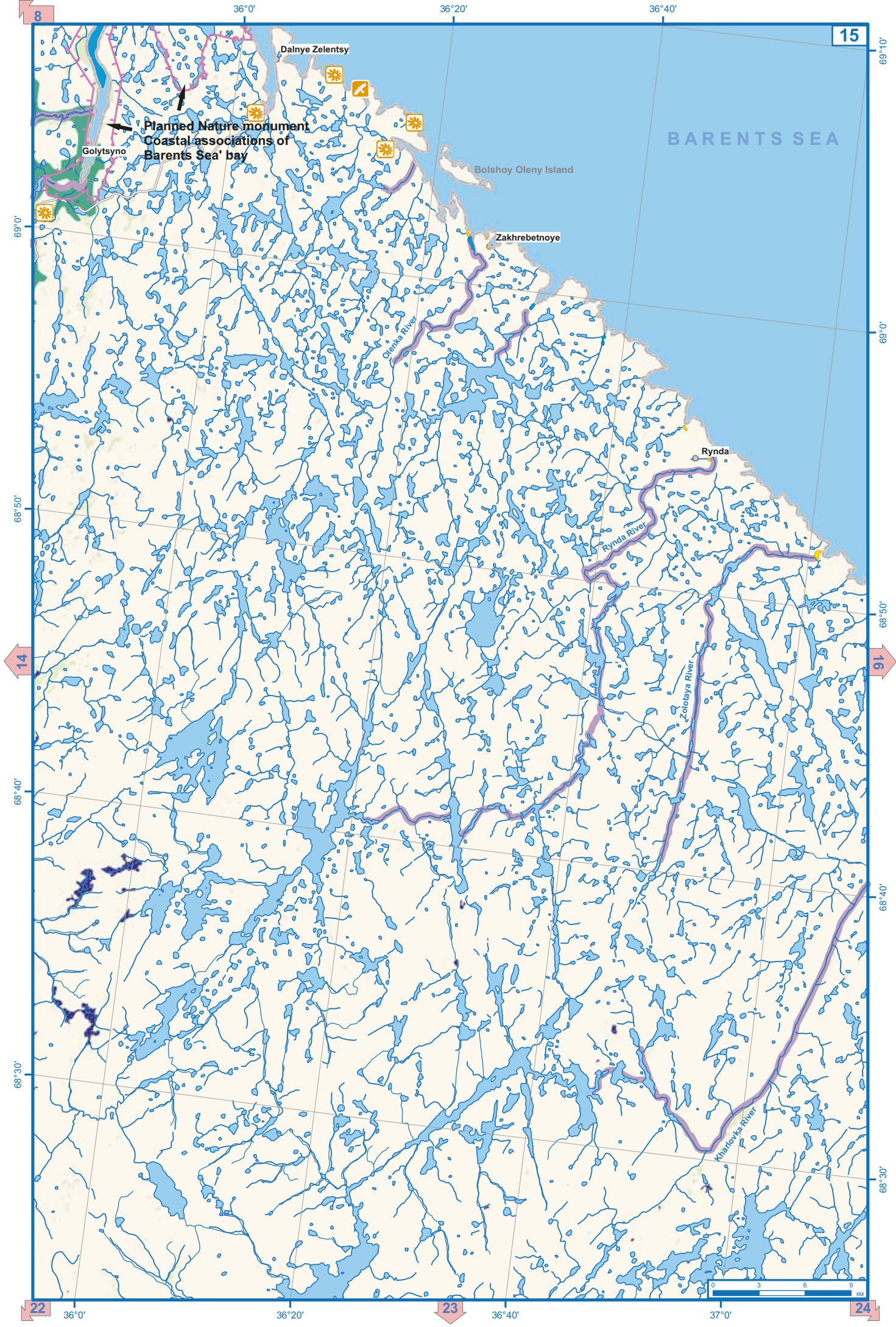
SEVEROMORSK - 3

Kitsa River











BARENTS SEA

Kandalaksha Strict Nature Reserve

Kharlovka

Vostochnaya Litsa

37°0'

37°20'

37°40'

38°0'

69°10'

69°0'

68°50'

68°40'

68°30'

69°10'

69°0'

68°50'

68°40'

68°30'

15

23

24

25

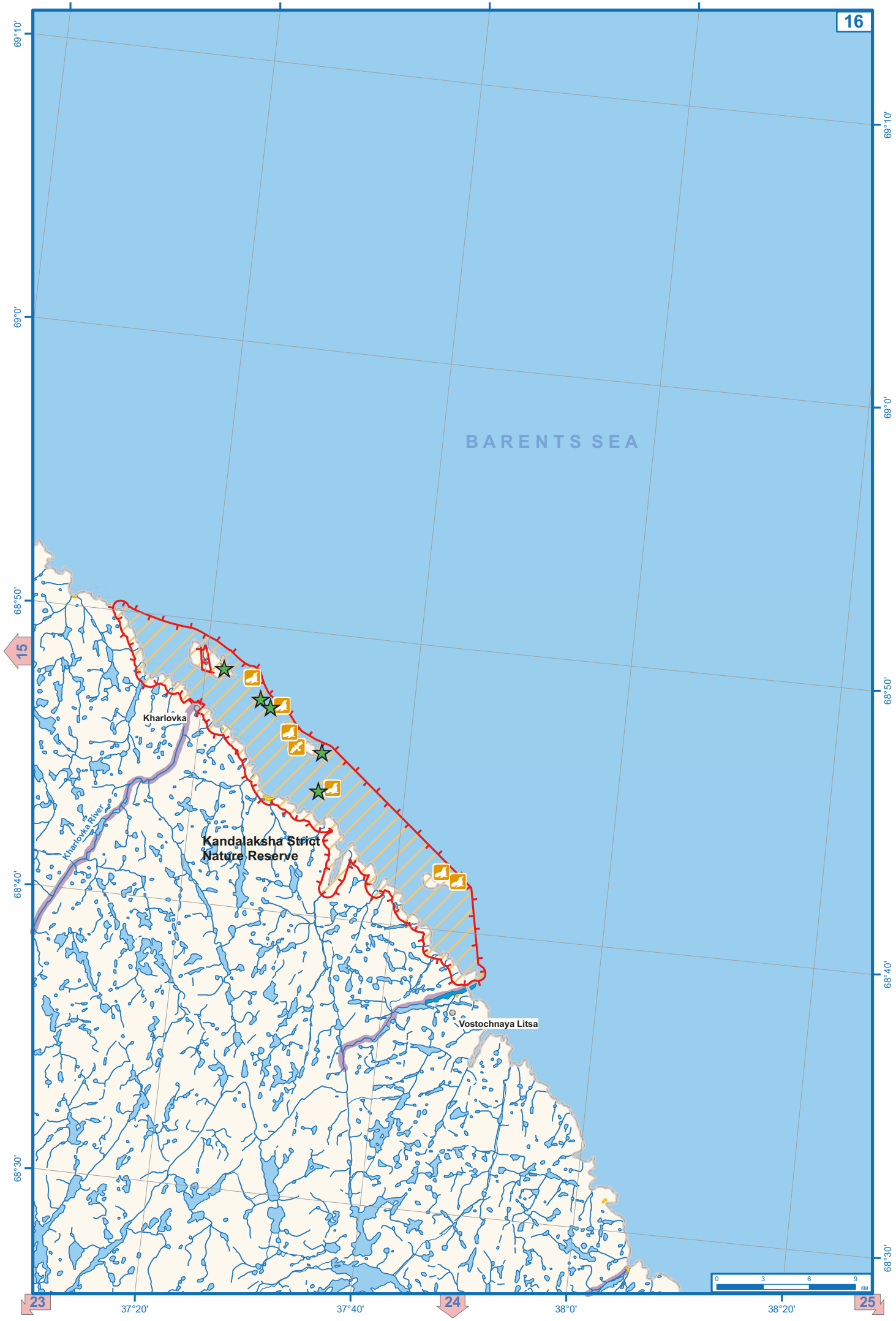
37°20'

37°40'

38°0'

38°20'

Kharlovka River





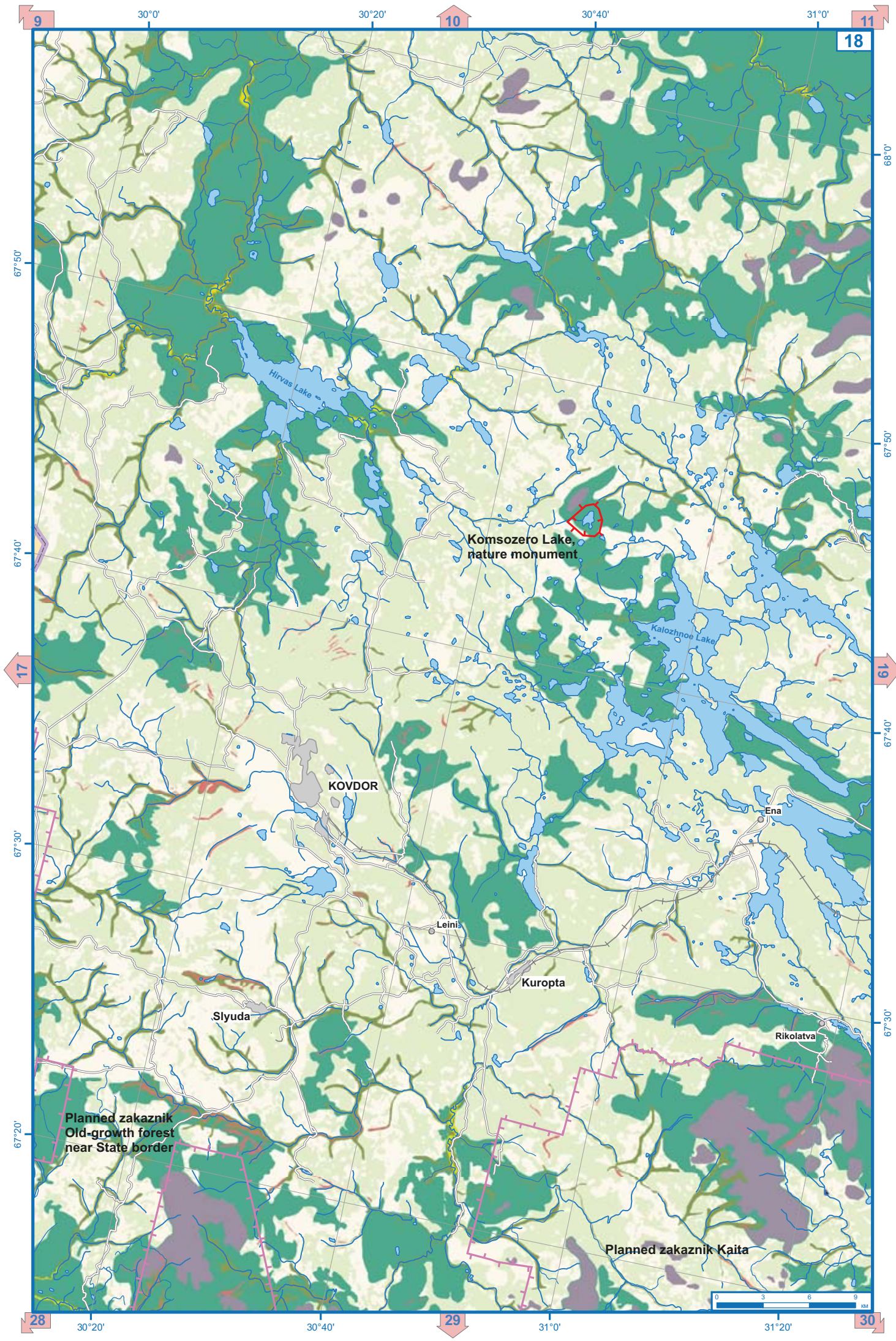


FINLAND

Planned zakaznik Old-growth forest close to State border







Komsozero Lake,  
nature monument

KOVDOR

Leini

Kuropta

Slyuda

Ena

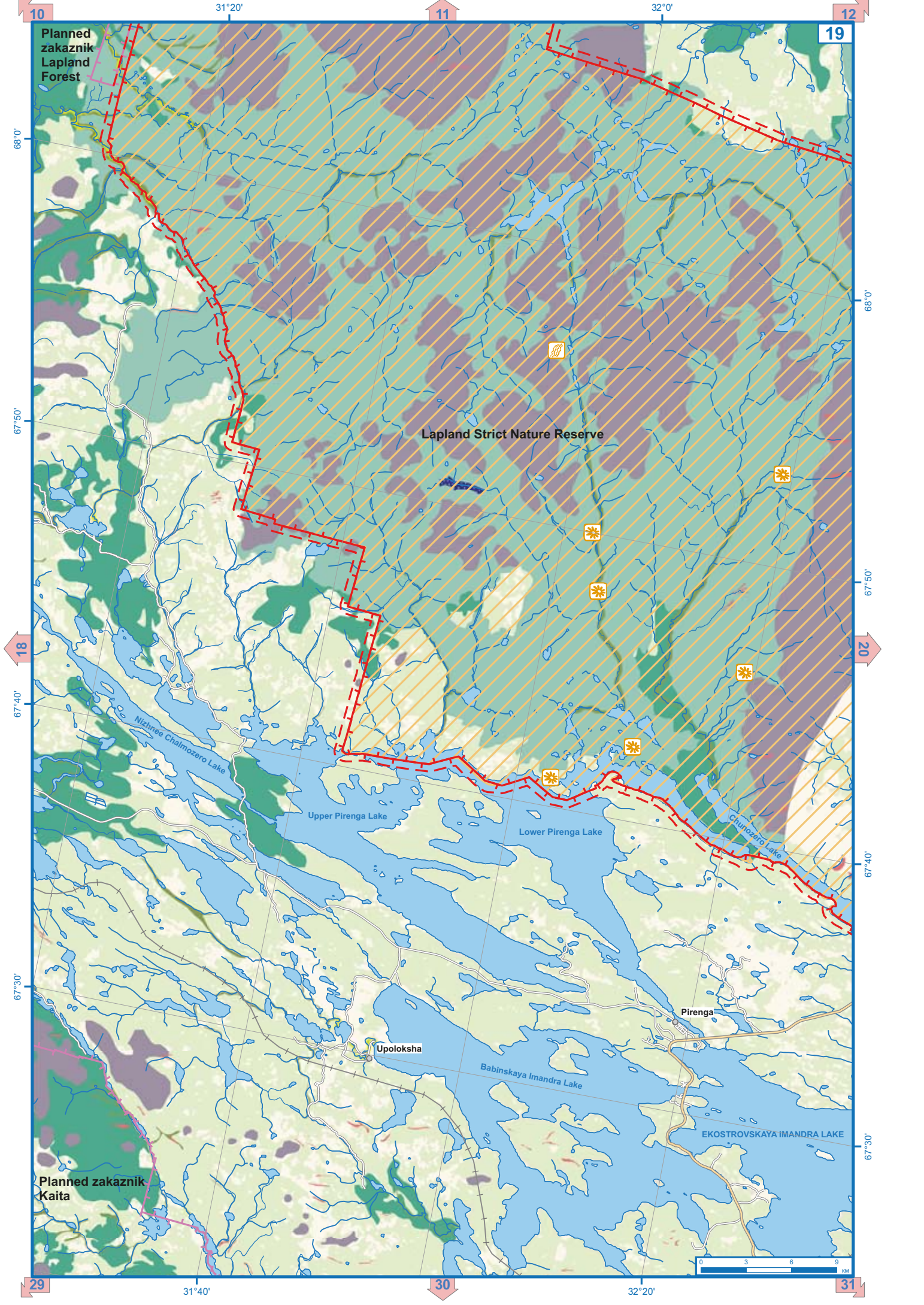
Rikolatva

Planned zakaznik  
Old-growth forest  
near State border

Planned zakaznik Kaita







Planned zakaznik  
Lapland  
Forest

Lapland Strict Nature Reserve

Planned zakaznik  
Kaita

Nizhnee Chalmozero Lake

Upper Pirenga Lake

Lower Pirenga Lake

Chumozero Lake

Upoloksha

Babinskaya Imandra Lake

Pirenga

EKOSTROVSKAYA IMANDRA LAKE





